



Rose Petals



Short Rose-Related Info-Bits to Stay Connected

January 15, 2023 Edition

Non-UGC Rose Spotlight: *The Squire*



Photo by Marsha Yokomichi

By Marsha Yokomichi
HRS Master Rosarian

The Squire is a crimson shrub rose bred by David C.H. Austin in 1976. It was known as the best crimson rose bred by Austin when it was first introduced. It is said that **The**

Squire has an upright growth habit and can reach heights of 3 ½ feet to 5 feet with a spread of 3 to 4 feet wide. In my Aiea garden, it stands about 6 feet tall and is about 2 1/2 feet wide with pruning to keep it in check.

Reference materials say that the flowers of this variety bloom either singularly or in clusters. However, I have never seen a cluster of **The Squire** roses on my plant as all have bloomed singularly on long straight stems.

The Squire blooms are said to reach widths of up to 4 inches across. However, in the Winter months when the weather in Aiea is cool, reaching 66 degrees F at night and 80 degrees in the day, blooms are even bigger. The blooms on my

Continued on Page 2

UGC Rose Spotlight: *Princesse Charlene de Monaco*

By Cathy Matsuzaki

Princesse Charlene de Monaco is a gorgeous Hybrid Tea rose characteristic of her royal namesake, the beautiful Charlene, Princess consort of Monaco. Princess Charlene is a former Olympic swimmer and is married to Albert II, the reigning Prince of Monaco and head of the House of Grimaldi.

The **Princesse Charlene de Monaco** rose is part of the Star Roses Romantica® rose collection along with such HRS favorites as *Yves Piaget*, *Rouge Royale*, *Peter Mayle* and *Bolero* just to name a few. Like the other roses in the Romantica® collection, this rose holds old world romance and charm



Photo by Myrna Cariaga

and combines the grace, beauty and fragrance of classic English roses. They also have the ability to produce an abundance of blooms,

Continued on Page 2



Announcing: Eighth-Annual HRS Rose School A Return to In-Person Programming



We are happy to announce that registration is now open for the 2023 HRS Rose School. This is the first time since 2019 that we are holding this highly regarded educational event due to the pandemic.

The HRS Rose School is a series of four comprehensive and interactive monthly workshops focusing on the fundamentals of rose gardening specific to Hawaii's climate.

Attendees will be given a miniature rose plant that they will be caring for and bringing back to every workshop. Class-size is limited to the first 30 sign-ups.

Workshop Dates:

Sat., March 25, 9:30am-12pm
History of Roses; Planting & Potting

Sat., April 22, 9:30am-12pm
Fertilizing Roses

Sat., May 27, 9:30am-12pm
Pruning Roses

Sat., June 24, 9:30am-12:30pm
Maintaining Roses—Pests & Diseases

Fee to Attend:

\$45 Current (2023) HRS Member
\$60 Non-HRS Member (includes annual HRS membership)

More Information: <http://www.honolulurosesociety.org/2023-rose-school.html>

Continued from Page 1

plants have been recently measuring 5 inches across! The strong fragrance of this beautiful rose is reminiscent of an old garden rose aroma which fills the air during mid-mornings when it is in bloom. Petal counts are between 26 – 40 petals per bloom.

The Squire was named after a character in Geoffrey Chaucer's book *Canterbury Tales*. This well-known literary work is comprised of 24 stories written between 1387-1400. The book is regarded as one of the most important works in English literature. The Squire is the Knight's servant but he is also the Knight's son and both he and his father represent the noble class in the stories.

The Squire is very highly regarded in rose show competition, especially in the Pacific Southwest district of the American Rose Society. An article on **The Squire** by Consulting Rosarian Suzanne Horn quotes Lynn Snetsinger of Arcadia, CA stating that "**The Squire** is the best exhibition shrub that Austin ever hybridized, and it is the standard by which all other shrubs seem to be judged." Lynn has won numerous trophies for her entries of **The Squire** in rose shows.

In summary, Suzanne describes the rose as, "the perfect addition to any exhibitor's collection or garden plan, where it will add just the right touch of color and romance and provide superb cut flowers for all occasions. It is quite simply a must-have English rose, and a

trophy hunter's dream. I couldn't agree with her more.

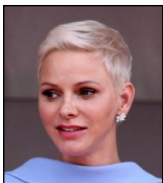
The Squire is said to be prone to Powdery Mildew. However, I can attest to the fact that the rose thrives on neglect as I have not sprayed fungicide for several months and I have no Powdery Mildew in sight. It loves the cool weather we are currently experiencing and it is absolutely thriving. My plant is on fortuniana-root stock which I purchased from K&M Nursery online about 7-8 years ago.

Sources: https://en.wikipedia.org/wiki/Rosa_%27The_Squire%27;

https://en.wikipedia.org/wiki/The_Canterbury_Tales;

<http://www.pacificrosesociety.org/TheSquire.html>

UGC Rose: *Princesse Charlene de Monaco*



Princess Charlene
Photo by Marco Canoniero/
Getty Imags

Continued from Page 1

are low maintenance and have the modern-rose trait of excellent disease resistance.

The fully double blooms of **Princesse Charlene de Monaco** feature elegantly ruffled petal edges with an alluring strong and sweet fragrance of fresh fruit and perfume. It is, therefore, an excellent cut rose to bring inside to enjoy in a vase. Ovoid buds open to eye-catching blossoms averaging 5-inches in diameter and feature a charming blend of light apricot to shell pink coloration.

Each very large bloom has tightly packed petals and boasts a 100+ petal count. Borne mostly solitary in small clusters, it has a button-eye (a characteristic of very full-petalled old roses), cupped, old-

fashioned bloom-form. **Princesse Charlene de Monaco** roses are nicely accented against medium green, semi-glossy foliage. The plants have an upright and bushy growth habit, reaching heights of 5 to 6 feet tall and 2 to 3 feet in width. As with nearly all roses, it does best in full sunlight and well-drained soil.

Awarded as the *Most Outstanding Rose* at the 2018 Biltmore International Rose Trials in Asheville, North Carolina, **Princesse Charlene de Monaco** also won the *Cornelia Vanderbilt Cecil Award* for Most Fragrant Rose and the *Pauline Merrell Award* for Best Hybrid Tea Rose. This diva of a rose is also an award winner for the American Garden Rose Selections (AGRS). Bred by Alain Meilland before 2010, **Princesse Charlene de Monaco** was distributed by Star Roses & Plants.

Having been planted in January 2017, **Princesse Charlene de Monaco** is considered one of the "older roses" thriving at the UGC Rose Garden. This variety is

planted in the Showcase Rose Garden on the Mauka-side in the second bed from the pavilion. The plants have a stately upright growth habit reaching skyward to heights of nearly 6 feet tall with a spread of about 2 feet. Although their leaf-growth is somewhat sparse near the bottom of the plants, they are bushier near the top of the plants. They are also almost always in bloom whenever we have weekly Maintenance Days.

Princesse Charlene de Monaco not only is a part of the Star Roses Romantica® collection but is also part of the Bloomables® and Scentables™ collections of Star Roses and Plants. As we mentioned in our previous articles, Bloomables® is a specially selected collection of Star Roses' best flowering plants that are easy to grow and focuses mainly on the flowering aspect of the plants to bring color and beauty to the garden. Also, Star Roses' new Scentables™ program features very fragrant roses with fruity, spicy and

Continued on Page 3

Rose Care Info: *Citrus Blackfly*

By Marsha Yokomichi
HRS Master Rosarian

Recently, a member of the public submitted an inquiry via our Honolulu Rose Society website. The following is an excerpt from her message.

She writes, "I'm hoping that you can help me. I have these nasty looking things on my rose leaves. I don't know if they are eggs of a type of bug or some kind of Scaly pest. I notice this pest is on the older leaves. Please, any information you can share with me will be greatly appreciated. My roses are doing beautifully but I think these pests do affect them. I also have these tiny little orange looking bugs that are on my other rose plants, smaller than aphids, but you can see their orange color."



Photo Submitted by Sheri L.

I have actually seen this exact same thing on the underside of leaves at the UGC Rose Garden. I assumed that they were a type of Scale insect because they look similar to small Black Scales and White Armored Scales that we sometimes see on the canes of roses at the UGC Rose Garden. However, what intrigued me about this insect was that they were not on the canes of the roses but on the underside of leaves. That itself was not a characteristic of Scales that we've come to know.

After doing some research, I found that the black specks on the underside of the rose leaves are actually the eggs of **Citrus Blackflies**. The dead giveaway are the little orange-looking bugs that the writer said was on her other

rose plants. Those orange-looking bugs are the mature version of **Citrus Blackflies** as pictured below.



Photo Source:

<https://idtools.org/id/citrus/pests/factsheet.php?name=Citrus%20blackfly>

Citrus Blackfly (*Aleurocanthus woglumi* Ashby) was first discovered in Jamaica in 1913. Over the years, it spread to Cuba, Mexico and then Florida. It is presently widespread from north-central Florida through south Florida. Therefore, it should come as no surprise that Hawaii's tropical climate which is similar to Florida's would make populations of **Citrus Blackfly** feel right at home. What is worse is that roses are known non-citrus hosts for the **Citrus Blackfly**.

Like Whiteflies, which are a close cousin of the **Citrus Blackfly**, there are a number of parasitic wasps that prey on **Citrus Blackflies**. The populations of **Citrus Blackfly** and Whiteflies in gardens that practice Integrated Pest Management techniques seldom become overwhelming because of this.

However, problems can start to arise when the honeydew secretions of the **Citrus Blackfly** and other soft bodied insects such as Aphids, Soft Scales, and Thrips start to develop on leaves. Sooty Mold then develops on the Honeydew secretions and in turn inhibit photosynthesis. Also, the presence of ants and the symbiotic relationships that they share with these bad bugs can also have an effect on parasitic wasps' ability to control the population of **Citrus Blackfly** as well as other soft bodied insects.

Since we practice Integrated Pest Management methods in the Urban Garden Center Rose Garden, my recommended first line of defense is to spray them off with a strong stream of water. One should only consider more toxic methods such as insecticidal soap or horticulture oil when it is absolutely necessary.

Source:

https://entnemdept.ufl.edu/creatures/citrus/citrus_blackfly.htm

UGC Rose: *Princesse Charlene de Monaco*

Continued from Page 2

sweet fragrances to enhance the gardening experience. We invite you to visit the UGC Rose Garden to "Stop and Smell the Roses" and delight your senses in the sweet aroma of this enchanting royal rose.

Sources:

https://en.wikipedia.org/wiki/Charlene,_Princesse_of_Monaco
<https://>

www.helpmefind.com/gardening/l.php?l=2.65539.2

<https://www.starrosesandplants.com/plants/Princessee-charlene-de-monaco/>

<https://meilland.com/en/traditional-garden-roses-collection/romantica-roses/#:~:text=ROMANTICA%C2%AE%20roses%20are%20the,or%20Belle%20ROMANTICA%C2%AE%20Meigapencey>

<https://paulzimmermanroses.com/resources/biltmore-international-rose-trials/2018-results/>

<https://www.starrosesandplants.com/collection/scentables/>



Armchair Traveler: Queen Louise's Rose Garden in Bernstorff Palace Garden, Denmark

By Marsha Yokomichi
HRS Master Rosarian

Queen Louise's Rose Garden in Bernstorff Palace Garden is a quaint rose garden which features roses grown as standards or tree roses. **Queen Louise's Rose Garden** was recently restored to its old glory and features 42 tree roses and a scattering of climbing roses in several varieties.



Queen Louise of Denmark
Source: https://en.wikipedia.org/wiki/Louise_of_Hesse-Kassel

companion plants in formal box hedges. The garden is located at Bernstorffsvej 199, Charlottenlund 2920, Denmark. Free admission.

Sources:
<https://en.wikipedia.org/wiki/Crinoline>
<https://www.wrc2018.dk/roses.html>

https://www.yourdanishlife.dk/wp-content/uploads/2017/07/IMG_1665.jpg



grew them in a portion of her garden surrounding the palace. There she served afternoon tea for her guests sitting among her rose standards and under her climbing roses.



The roses were specifically of this type because women during the 19th Century, when the rose garden was developed, wore crinoline dresses which did not allow them to bend down to smell the roses. Interestingly, the tree roses are also trimmed and shaped to resemble crinoline skirts.



Above: HRS Member Bess Tanabe and her sister Claire.



Source: <https://en.wikipedia.org/wiki/Crinoline>

Danish Queen Louise, wife of King Christian IX, resided at Bernstorff Palace during the second half of the 19th Century. She loved roses and



That tradition continues today as **Queen Louise's Rose Garden** is also home to Queen Louise's Tea House which serves afternoon tea from May until October, 11am - 5pm.

Queen Louise's Rose Garden was a sight to behold when several of us (HRS members) visited the garden as part of the 18th World Rose Convention in 2018. Rose standards were in full bloom growing among other beautiful

All Photos by Marsha Yokomichi unless otherwise noted.

The HRS Rose Petals newsletter is published on a monthly basis. If you would like to submit an article and or photos, please email to:

myokomichi@hawaii.rr.com for possible inclusion in a future edition.

HRS Rose Petals Newsletter
Marsha Yokomichi, Editor
Post Office Box 1932
Honolulu, HI 96805