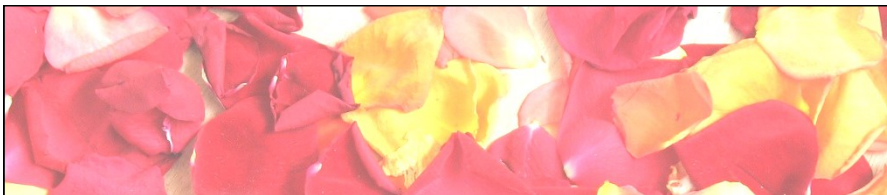




Rose Petals



Short Rose-Related Info-Bits to Stay Connected

October 15, 2022 Edition

UGC Rose Spotlight: *Love Song*



Photo by Cathy Matsuzaki

By Cathy Matsuzaki

A palette of colorful roses in the Terrace Garden Beds enliven the blue-gray gravel walkway leading up to the Rose Garden, creating an impressive first impression for anyone visiting the garden. The

beautiful **Love Song** Floribunda rose is planted on the left-hand side of the Terrace Beds, blending nicely between the red-blend *Lokelani* (*Louis Philippe*) rose and pink-blend *Louise Estes* rose. A lavender/mauve shade, **Love Song** is at its prettiest when the bush is covered in an abundance of clustered blooms. These lovely long-lasting blooms hold its color well as the rose matures.

Bred by renowned hybridizer Tom Carruth before 2009, **Love Song** was introduced in the United States in 2011 by Weeks Wholesale Rose Grower, Inc. Each rounded ovoid bud within the cluster unfolds to a medium to large very full double petaled bloom with a mild citrus fragrance.

Continued on Page 2

Rose Care Tidbit: *Mealybugs*

By Marsha Yokomichi
HRS Master Rosarian



The *Mealybug* spotted by Adela at the UGC.
Photo By Cathy Matsuzaki

Recent sightings of **Mealybugs** on HRS Member Myrna Sugiyama's lemon tree and at the UGC Rose Garden by HRS Member Adela Rhoades led me to do research on this occasional rose garden pest.

A Close Cousin of Scales

Early life-stages of **Mealybugs** sometime resemble Scales. Both are, in fact, part of the

Continued on Page 3

Non-UGC Rose Spotlight: *Easy Does It*

By Marsha Yokomichi
HRS Master Rosarian

Easy Does It, the beautiful orange-apricot Floribunda rose hybridized by Robert and Philip Harkness of the United Kingdom before 2006, is this month's featured Non-UGC Rose.

Easy Does It is a stunning rose with unusual scalloped petals much like the *Alexander* rose featured in our Armchair Traveler article. The **Easy Does It** variety is known to be quite easy to grow as can be surmised by its name. However, for us, the experience of growing **Easy Does It** in our UGC Rose Garden was anything but "easy."

In 2015, the variety spent a mere year in our Showcase Rose Garden section before being relegated to our



Photo by Laurie Shimabukuro

Alumni Row and then it was removed completely a few years later. The variety just had a very difficult time acclimating to our hot and humid weather and there was never truly a time when it became established and was flourishing in our garden. I can say the same for

the one plant that I had at home of this same variety. Nevertheless, the **Easy Does It** rose is a very photogenic rose that I'm guessing may need cool weather to do its best. I have seen it growing extremely well in mainland gardens and was quite surprised to see it doing equally well in the Maui Agricultural Research Center Rose Garden an extension of the University of Hawaii system.

HRS Consulting Rosarian Laurie Shimabukuro took a beautiful photo of the rose when we visited the garden as part of our Honolulu Rose Society's 40th Anniversary trip to Maui back in 2015.

The **Easy Does It** rose also impressively was the only variety to

Continued on Page 2

**Love Song**

Photo Source:

<https://www.weeksroses.com/product/love-song/roses>

Continued from Page 1

Love Song averages 3-1/4 inches in diameter with 50 to 65 petals and has a high-centered, cupped bloom form. Sources indicate that cooler temperatures generally produce larger flowers.

The bushy well-rounded upright plant is clothed in rich green foliage and has good disease-resistance. **Love Song** can grow to 4-1/4 to almost 5 feet in height with a width of 28 to 35 inches. The **Love Song** plants in the Terrace Beds are

UGC Rose: *Love Song*

flourishing nicely. They are very full with an abundance of green healthy foliage and reaching heights of 2-1/2 to 3 feet. On most weeks when we have Maintenance Days, at least one of the **Love Song** plants is in bloom.

This is actually the third time we are growing **Love Song** in the UGC Rose Garden. We initially planted it in the garden in 2015 when the rose garden was designed in seven large beds in the Showcase Garden area. It turned many heads and stopped visitors in their tracks as they made it a point to stop and take photos of this beautiful rose when they saw it. It was definitely one of the favorites of the time and we were so torn when we were forced to uproot them because of a pending large renovation of the garden in late 2015.

We overhauled and redesigned the rose garden in late 2015 to early 2016 transforming the original seven beds featuring 28 varieties into 30 beds featuring 54 varieties. After the renovation was complete, we replanted **Love Song** in the rose garden but it never really settled in well after a slow start. The current planting of the variety took place in

Spring 2022 and we are happy to report that **Love Song** is once again flourishing in all its glory at the UGC Rose Garden.

The delicate and ruffled edged petals definitely adds a feminine, old fashioned and romantic quality to this Floribunda rose. One can see connections in coloring to **Love Song's** lineage with *Stainless Steel* and *Blueberry Hill*. Its rounded petals are also reminiscent of *Memorial Day* another one of its parents. Noticeably missing, however, is significant fragrance which one may have assumed would be present because of its connection to *Stephen's Big Purple* and *Memorial Day* both of which emit considerable fragrance. Minus the fragrance factor, **Love Song** is still a beautiful rose that still turns heads and stops visitors in their tracks over 11 years after it was introduced to the market.

Sources:

<https://www.helpmefind.com/rose/l.php?l=2.65776.0>

<https://www.heirloomroses.com/love-song.html>

<https://www.weeksroses.com/product/love-song/roses>

Non-UGC Rose: *Easy Does It*

Continued from Page 1

be given the All-America Rose Selection (AARS) designation for outstanding rose varieties in 2010. The bushes can reach heights of 3 feet to 4-1/4 feet and widths up to 2-1/2 feet. Blooms feature 20 to 30 petals with a light fruity-tea fragrance.

So, this Non-UGC Rose was once a UGC-Rose and if you have the opportunity to grow *Easy Does It* in your garden, you should try it! We may have just had a case of bad luck with the variety but if it grows well in your garden, you will surely be rewarded by the beauty of this stunning rose.



Easy Does It in Kula, Maui
Photo by Marsha Yokomichi

Sources: <https://www.helpmefind.com/gardening/l.php?l=2.58853>

<https://www.weeksroses.com/product/easy-does-it/roses>

The HRS Rose Petals newsletter is published on a monthly basis. If you would like to submit an article and or photos, please email to:

myokomichi@hawaii.rr.com for possible inclusion in a future edition.

HRS Rose Petals Newsletter
Marsha Yokomichi, Editor

Rose Care Tidbit: Mealybugs

Continued from Page 1

Pseudococcidae insect family. Both are similar in that they are not highly mobile and they both deprive host plants of nutrients as they suck sap from its leaves and stems. They also secrete honeydew which can lead to ant problems in the garden as well as sooty mold growth on leaves and stems which in turn, inhibit photosynthesis.

Vastly Different in Appearance

It was interesting to learn that **Mealybugs** in the usual form that we recognize are actually adult female **Mealybugs**. Adult male **Mealybugs** are winged insects which look totally different from the white oval-shaped crawling insects that we normally recognize as **Mealybugs**. Male **Mealybugs** do not have mouthparts and thus, they do not feed on plant sap.

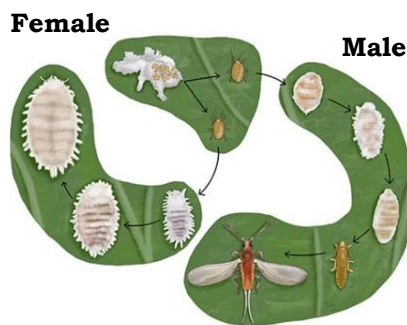


Diagram Source:
<https://www.biobestgroup.com/en/news/spotlight-on-mealybug>

Treatment

It's important to note that like Scales, mature female **Mealybugs** have waxy outer coats and are sometimes covered in a white powder-like substance. This makes them difficult to treat with horticultural oil unless they are still in the immature state. Instead,

reach for your garden hose and shoot them off of your plants with a strong stream of water as the first line of defense should always be the least toxic.

Remember, if you have been diligent about not using broad-spectrum chemical insecticides in your garden, there should be an abundance of beneficial insects to keep the **Mealybug** population in your garden under control. We should only step in to intervene when **Mealybugs** are becoming a problem. Our goal is to just get the population to a manageable level so that the beneficial insects in our garden can once again gain the upper hand.

Source: <https://www.biobestgroup.com/en/news/spotlight-on-mealybug>



Armchair Traveler: Stanley Park Rose Garden Vancouver, British Columbia, Canada

By Marsha Yokomichi
 HRS Master Rosarian



The **Stanley Park Rose Garden** was established in 1920 by the Kiwanis Club with the purpose of demonstrating the possibility of growing roses in Vancouver.

The **Stanley Park Rose Garden** currently features several hundred rose bushes in over 30 rose varieties in about 60 rose beds. In addition to the roses, there are over 3,500 perennials, annuals, and bulbs planted nearby and the **Stanley Park Rose Garden** is a spectacular burst of color amongst the lush green lawn from mid-June through September.

A feature of the garden is a large arbor with climbing roses cascading



on the walls of the structure. Walking through the arbor seems magical as the unmistakable scent of roses lingers through the air.

The Rose Garden is part of the 1,001-acre Stanley Park which is about one-fifth larger than

New York's Central Park. The **Stanley Park Rose Garden** is under the care of head gardener Mr. Peter Norton of the Vancouver Park Board.

The Rose Garden is located in the center of Stanley Park at 610 Pipeline Road, Vancouver, B.C. V6G 3E2, Canada. The garden is open 6am to 10pm daily. Admission is free. Definitely worth a visit if you're in the area!

Sources: <http://www.stanleypark.org/gardens-greenhouses.html>

<http://www.stanleyparkvan.com/stanley-park-van-garden-rose.html>

<http://www.en.wikipedia.org/wiki/>



Hybrid Tea *Alexander* by Harkness Roses, 1972.
 All Photos by Marsha Yokomichi